



Building Workplace Safety and Health Capabilities



Eileen Ho

Manager

Business Development

Workplace Safety and Health Council





Commercial diver's last act: Saving colleague's life in Pulau Sebarok accident



About 200 family members and friends gathered to send commercial diver Muhammad Fikrus Jazri off to rest...

PUBLISHED: JUN 23, 2018, 5:00 AM SGT



Worker killed at Marina Bay Sands IR site

Ladder falls backwards, causing construction worker to fall off

By Jimmy Choo

A CONSTRUCTION worker died after losing his balance and falling off a work platform at the Marina Bay Sands Intergrated Resort site on Thursday afternoon...

The 47kg structure was hoisted up to a lower level. Mr Tan added that his [1] was wearing his protective gear, which included a safety harness...



Mr Tan fell 11m to his death in this area after the ladder he was standing on wobbled while he was dismantling a wooden structure...

Marpower Ministry (MCM) safety officers have examined the site since the latest accident and have stopped work at the area for further investigation...

Resilient Engineers & Contractors, and its sub-contractors would be fined for the safety violations. The amount would be decided by MCM at a later date...

Fires break out at three places in one day

Toa Payoh blaze involves items left in common area

By The Straits Times

BUSY DAY FOR FIREFIGHTERS



CLAIMED LAND: Yesterday afternoon, the SCDF was mobilised to put fire occupying an area the size of a football field at a piece of reclaimed land north-east of Singapore.



HDB BLOCK IN TOA PAYOH: The fire on the eighth floor of Block 52 last night was the second one in a week that involved fires left in a common area.



TUAS PLANT: Technicians at the Eco SWM waste management plant were transporting an oblong into a funnel leading to an incinerator when the fire broke out early yesterday morning.

Three fire engines were dispatched and SCDF personnel put the blaze under control within an hour. The fire, which occupied an area the size of a football field, was completely extinguished by 6.30pm.

Firefighters arrived at the scene at 9pm and brought the blaze under control within an hour. The fire, which occupied an area the size of a football field, was completely extinguished by 6.30pm.

Channel NewsAsia Singapore Edition website interface showing a news article about a food service provider fined \$90,000 after the death of an employee.

Food service provider fined \$90,000 after death of employee



The Commonwealth Culinary Creations employee slipped and fell while walking towards a table to check on some pastries.

Two killed in separate workplace accidents



Advertisement for a 2-bedroom collection of residential units with a view of the city.

Advertisement for ST VIDEOS featuring Donald Trump.

DO YOU KNOW?

In 2017, there is an of average of....

32 workplace injuries each day
&
4 fatalities each month

WSH Journey

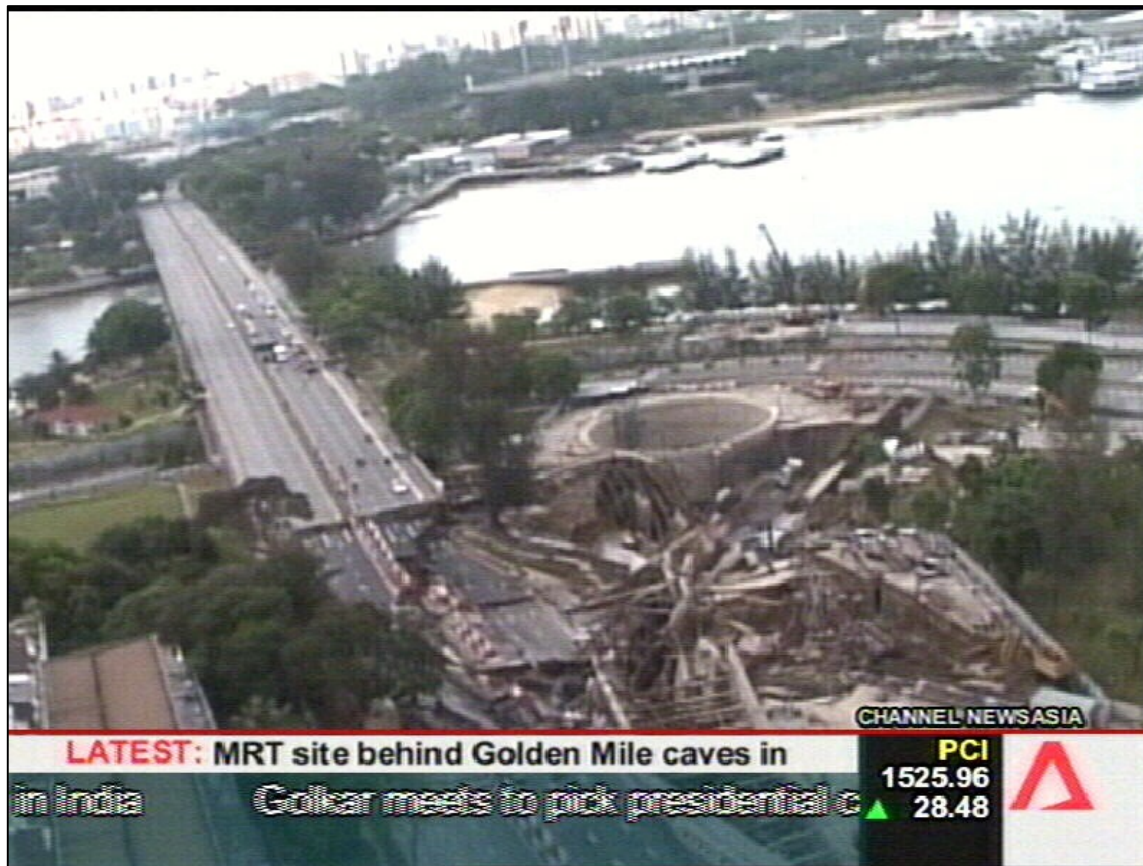
2004: High
Profile
Accidents



Period Prior to WSH Act



- Nicoll Highway collapse (20 April, 2004)
 - 4 deaths, 3 injured



WSH Journey



2004

2006: OSH Transformation

- Factories Act 1974 → WSH Act 2006
- Risk Management Regulations



Assess, eliminate, or take control measures against risks.

Establish and communicate Safe Work Procedures.

Conduct Risk Assessments and revise it at least once every 3 years.

WSH Act

Risk Management Regulations

Coverage of WSH Act



Phase 1
2006
High Risk Sectors

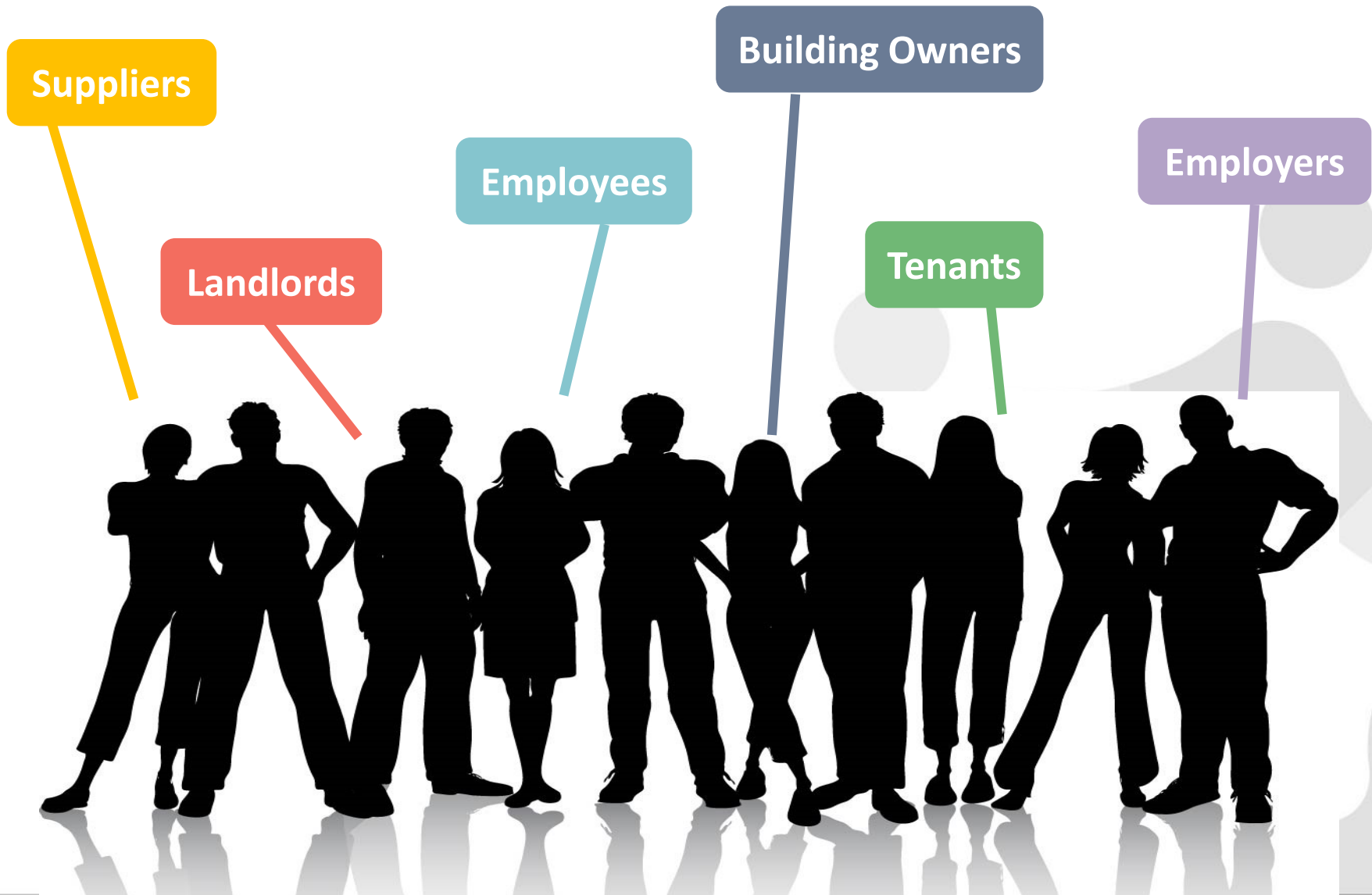
Phase 2
2008
Middle Risk Sectors

**ALL
INDUSTRIES**

Phase 3
2011
Low Risk Sectors

[Break-In Video](#)

Duty Holders of WSH Act



Suppliers

Landlords

Employees

Building Owners

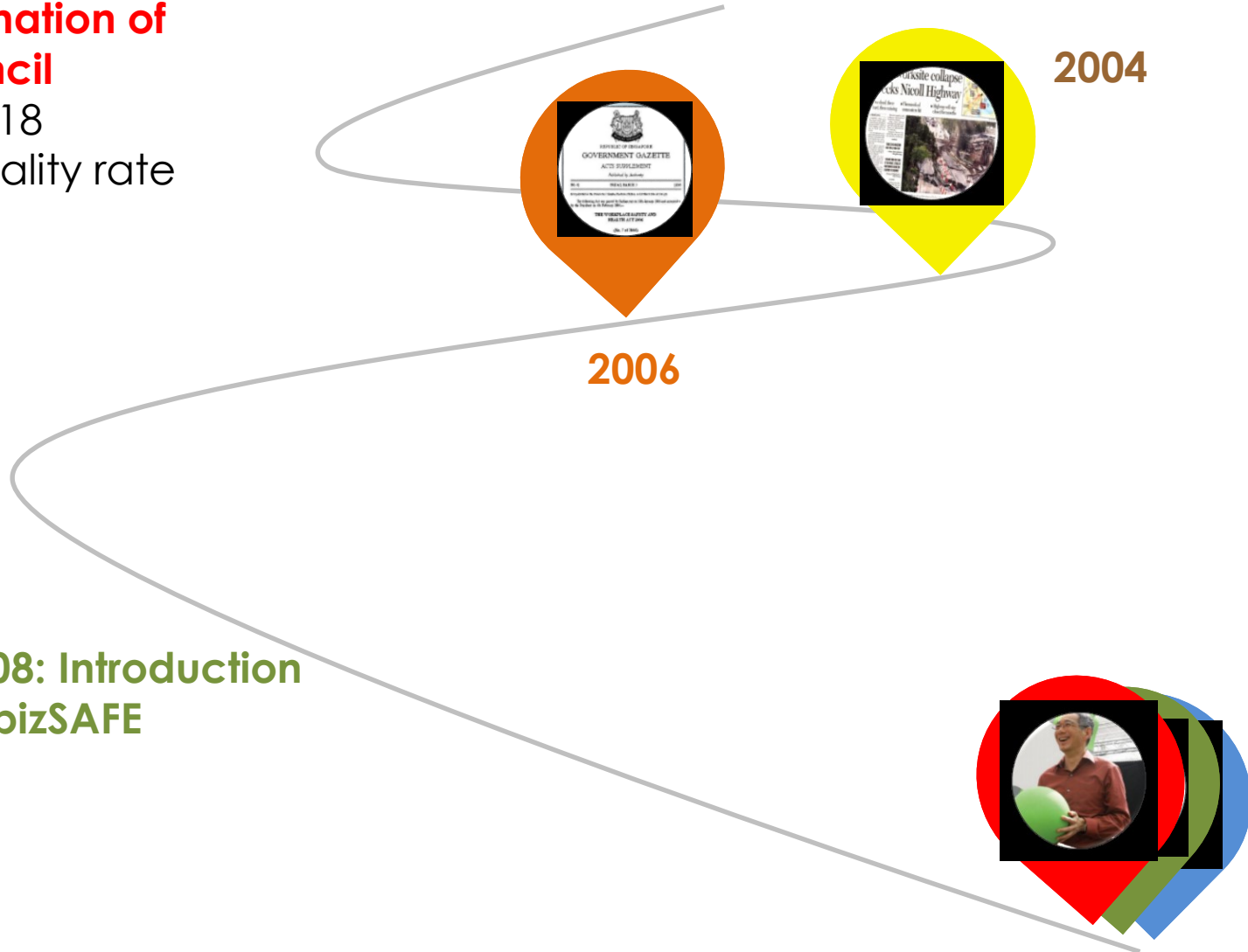
Tenants

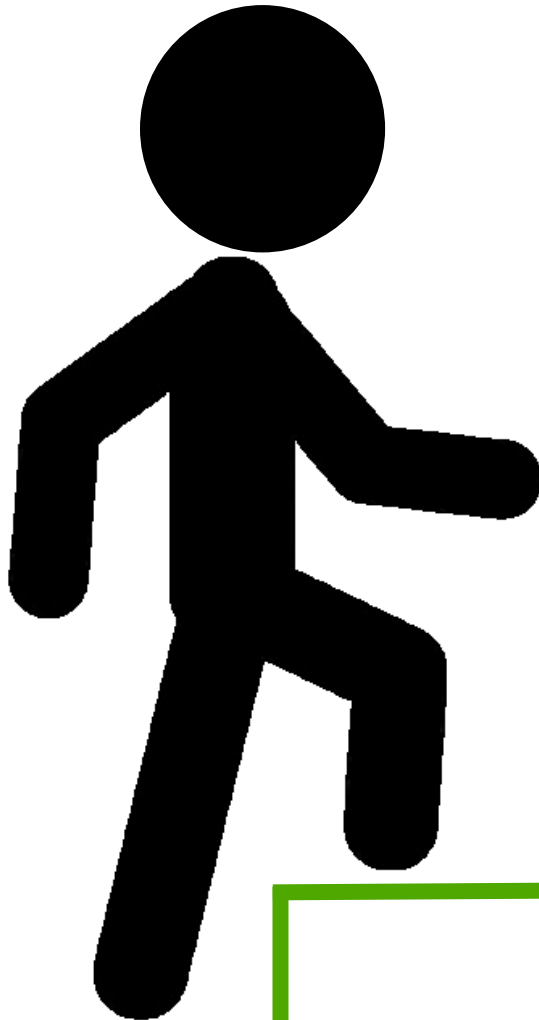
Employers

WSH Journey

2008: Formation of WSH Council

- WSH 2018
- <1.8 fatality rate





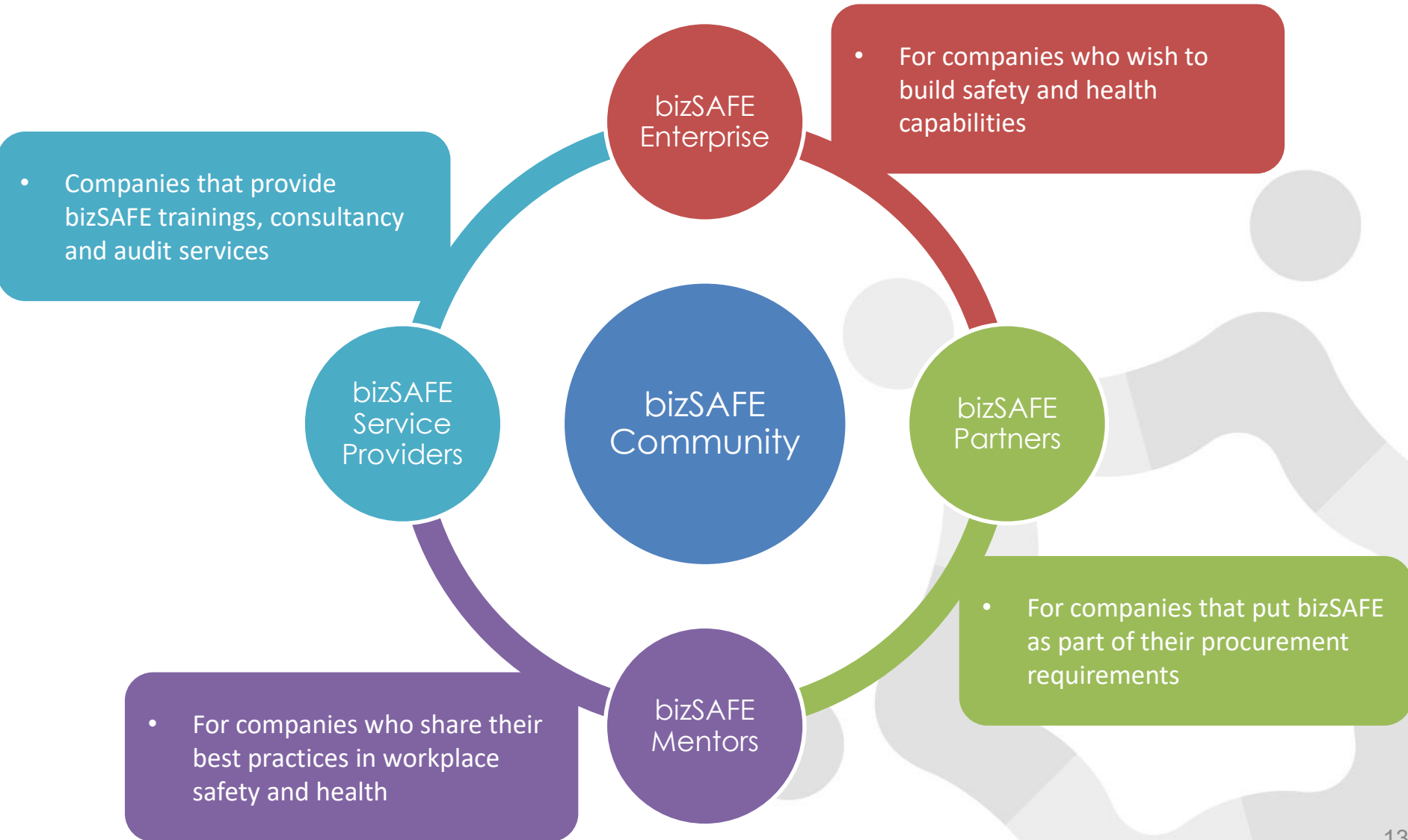
SAFE

Industry **Recognition**

Approach – **Five** Levels

Build Workplace Safety, Health, and Security **Capabilities**

bizSAFE Community



bizSAFE Enterprise

- For companies who wish to build safety and health capabilities

bizSAFE Partners

- For companies that put bizSAFE as part of their procurement requirements

bizSAFE Mentors

- For companies who share their best practices in workplace safety and health

bizSAFE Service Providers

- Companies that provide bizSAFE trainings, consultancy and audit services

bizSAFE Community

	How?	Who?	What?
<p>bizSAFE Star Deliver excellence in WSH Management System</p>	<p>WSH Management System audited</p>	<p>Workplace to be audited under OHSAS 18001 / ISO 45001/ SS506 requirements</p>	<p>OHSAS 18001 / ISO 45001/ SS506 certificate</p>
<p>Level 4 Acquire capability in managing WSH systematically</p>	<p>4-day WSH Management System course Cost: \$700 - \$1000</p>	<p>Appointed WSH Management System champion</p>	<p>WSH Management System</p>
<p>Level 3 Implement Risk Management</p>	<p>Risk Management audit conducted by a MOM-Approved auditor Cost: \$500 - \$2000</p>	<p>Workplace to be audited</p>	<p>Risk Management audit report</p>
<p>Level 2 Acquire Risk Management Capabilities</p>	<p>2-day Risk Management course Cost: \$250 - \$380</p>	<p>Appointed Risk Management champion</p>	<p>Risk Management Plan</p>
<p>Level 1 Understand the legal obligations under WSH Act</p>	<p>½ day Workshop/ Online E-learning Cost: \$100 - \$200</p>	<p>CEOs, Managing Director, General Manager</p>	<p>WSH Policy</p>

Documents Required for bizSAFE Recognition (To be submitted online via WSHC website)

Validity

All Applications

Organisation Chart

+

Level 1

Certificate of Attendance for bizSAFE Level 1 workshop

+

Level 2

Statement of Attainment for Risk Management Course

+

Level 3

Risk Management Audit Report

+

Level 4

Statement of Attainment for WSH Management System Course

+

Star

OHSAS 18001/ ISO 45001/ SS 506 certificate

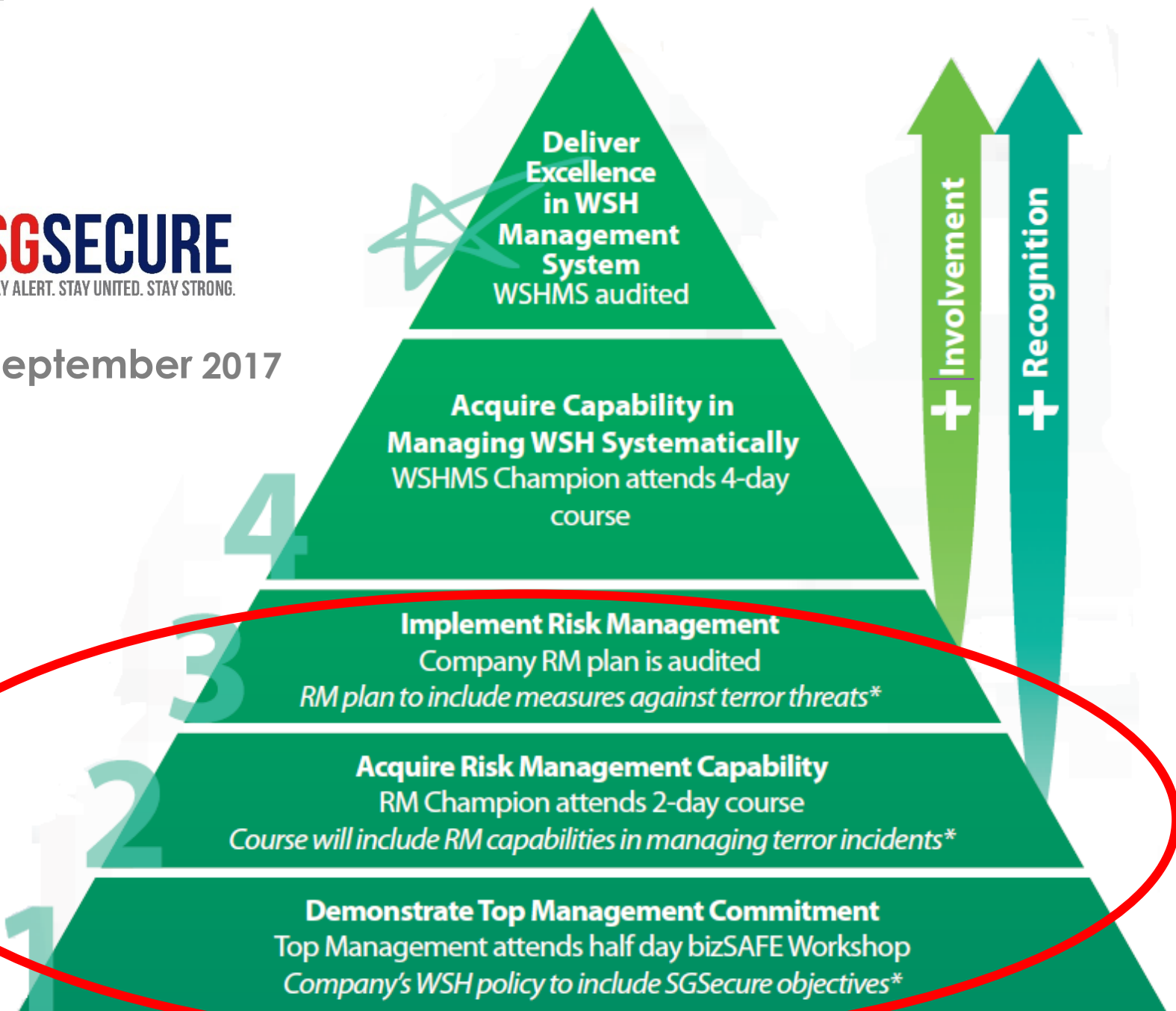
6 months/ level
Non Renewable

3 years/ level
Renewable



SGSECURE
STAY ALERT. STAY UNITED. STAY STRONG.

From 26th September 2017



*SGSecure components

Benefits



**Safer,
Healthier &
Secure
workplace**

**Competitive
edge over
business rivals**

**Positive
corporate
image**

**Meet
statutory
requirements**

**Recognition
(Logos, Certificate,
Awards)**

Effectiveness of bizSAFE



I



9/10 bizSAFE Enterprises agreed that bizSAFE helped to improve safety and health of their workplace.

75% of bizSAFE Enterprises would recommend others to join bizSAFE.

II



81% of client companies would prefer to engage bizSAFE Enterprises for future contracts because they managed WSH better than non-bizSAFE companies.

Effectiveness of bizSAFE



III

97%



83%



97% of bizSAFE Enterprises vs 83% of non-bizSAFE companies were aware of WSH risks in their workplaces.

IV

61%



39%



61% of bizSAFE Enterprises vs 39% of non-bizSAFE companies involved their workers in risk assessment process.

Effectiveness of bizSAFE



V

7%



28%



VI

84%



56%



More bizSAFE Enterprises had WSH programmes in place such as rewards and penalties to promote better WSH outcomes.

7% of bizSAFE Enterprises vs 28% of non-bizSAFE companies rushed workers to meet tight deadlines.

84% of bizSAFE Enterprises vs 56% of non-bizSAFE companies saw management staff attending WSH committee meetings.

WSH Journey



2008



2006



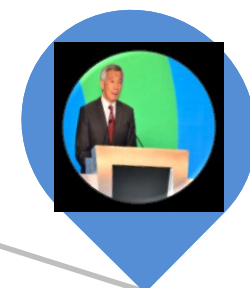
2004



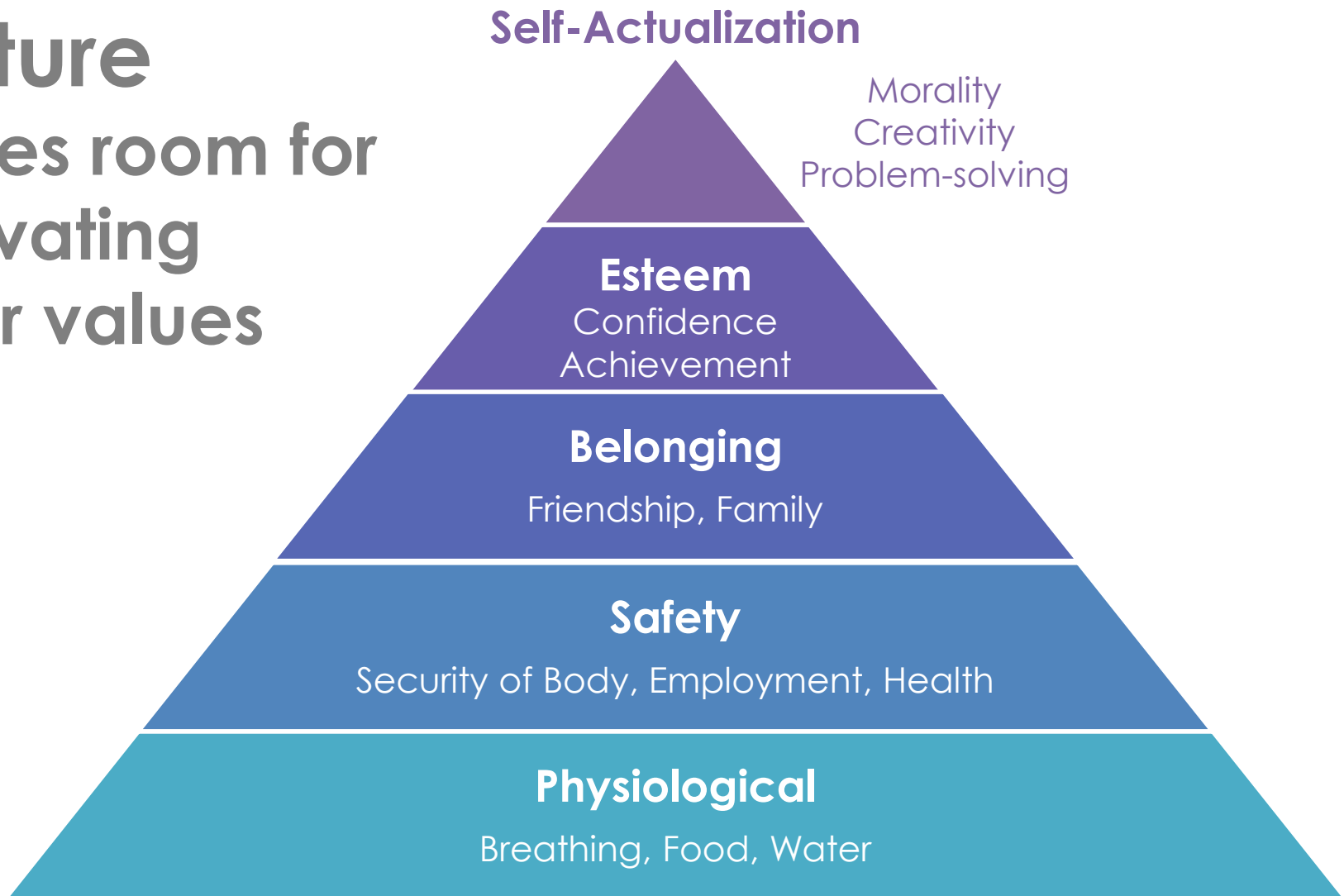
2008

2018: Healthy Workforce Safe Workplace

- Helped more than 30K companies thro bizSAFE
- 1.2 fatality rate
- WSH 2028



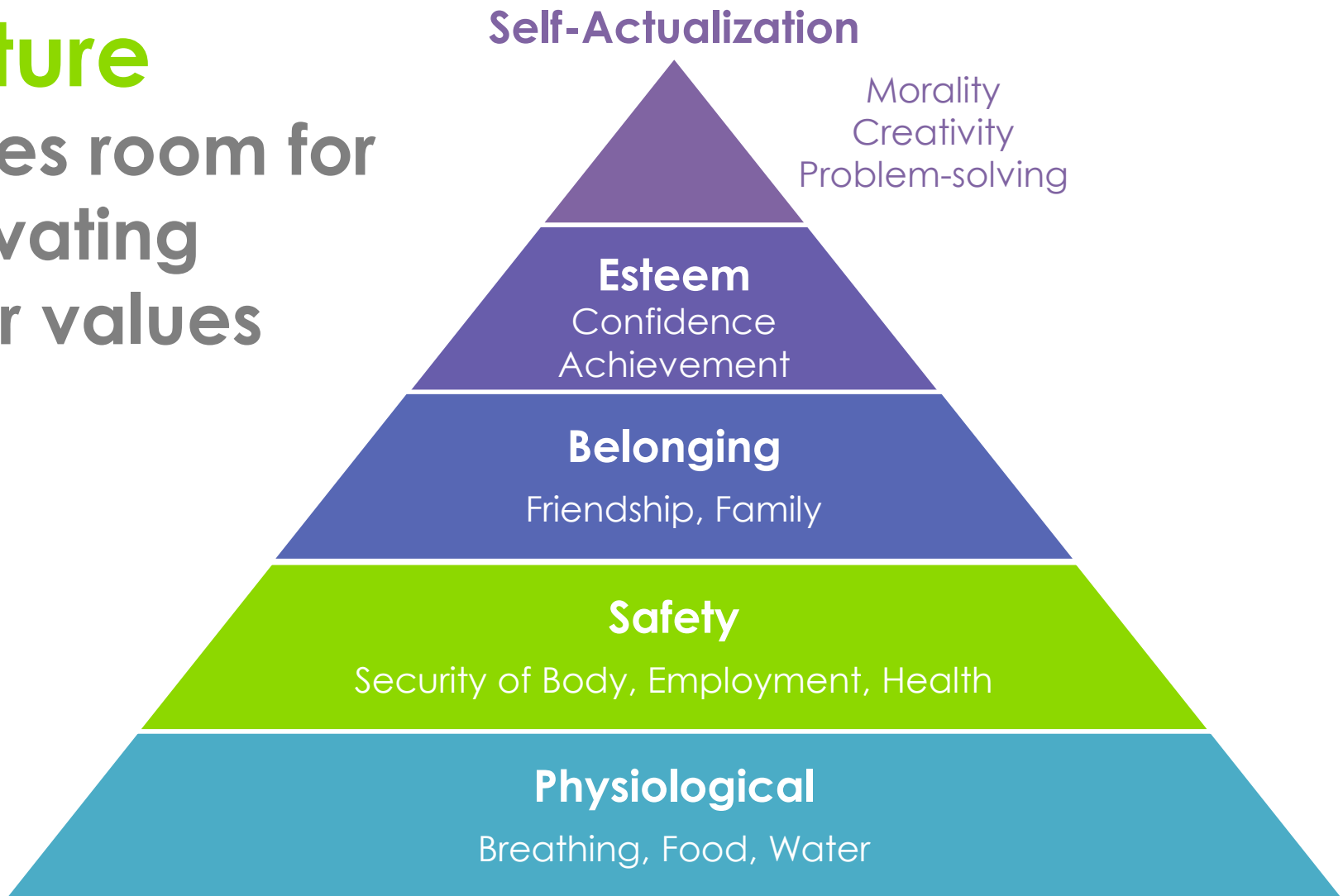
**Good Safety
Culture
leaves room for
cultivating
other values**



Maslow's Hierarchy of Needs

Good **Safety**
Culture

leaves room for
cultivating
other values



Maslow's Hierarchy of Needs

Popular belief is that death at work only happens to high risk sector such as construction

Our biggest blind spot is “This will not happen to me”

It is not a number...

Behind every death at work,
there is a heart-broken family 😞

Join the **30,000** strong bizSAFE
community, to protect our
employees

Because this is the right thing to do



Date: 20th September 2018
Time: 9.30am to 12.30pm

Enjoy a
complimentary
bizSAFE Level 1
workshop from us

Limited to the first
20 registrations!

Thank you